

\$4,000 - 105, 11706 99 Avenue, Grande Prairie

MLS® #A2238940

\$4,000

0 Bedroom, 0.00 Bathroom,
Commercial on 0.00 Acres

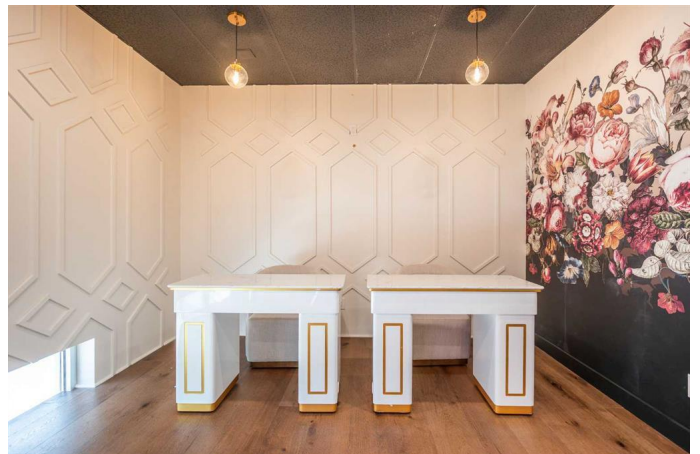
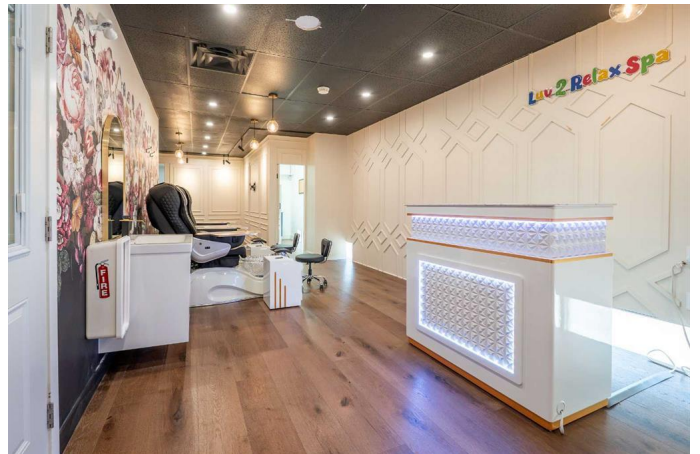
NONE, Grande Prairie, Alberta

Step into luxury with this fully operational, tastefully designed spa located in a high-traffic area inside Luv 2 Play Grande Prairie. This beautifully curated space offers a seamless blend of modern elegance and functionality, featuring high-end pedicure chairs, nail stations, a stylish front reception with LED lighting, a private washroom with a designer shower, and bold floral feature walls that create a warm, inviting atmosphere. With its top-tier finishes, premium fixtures, and thoughtful layout, this turnkey business is perfect for entrepreneurs looking to start or expand their spa or salon venture. Just unlock the doors and start serving clientsâ€”everything is ready to go. Rent is \$4,000 plus GST per month, including all utilities. Don't miss this incredible opportunity to own a boutique-style spa thatâ€™s a true showstopper. Please contact your favourite REALTOR® for more information. Do not contact employees of Luv 2 Play directly.

Built in 2009

Essential Information

MLS® #	A2238940
Price	\$4,000
Bathrooms	0.00
Acres	0.00
Year Built	2009
Type	Commercial



Sub-Type	Business
Status	Active

Community Information

Address	105, 11706 99 Avenue
Subdivision	NONE
City	Grande Prairie
County	Grande Prairie
Province	Alberta
Postal Code	T8W0C7

Additional Information

Date Listed	July 10th, 2025
Days on Market	20

Listing Details

Listing Office	RE/MAX Grande Prairie
----------------	-----------------------

Data is supplied by Pillar 9â„¢ MLS® System. Pillar 9â„¢ is the owner of the copyright in its MLS® System. Data is deemed reliable but is not guaranteed accurate by Pillar 9â„¢. The trademarks MLS®, Multiple Listing Service® and the associated logos are owned by The Canadian Real Estate Association (CREA) and identify the quality of services provided by real estate professionals who are members of CREA. Used under license.