

\$634,900 - 4608 Memorial Drive Ne, Calgary

MLS® #A2235117

\$634,900

5 Bedroom, 3.00 Bathroom, 1,057 sqft

Residential on 0.17 Acres

Marlborough, Calgary, Alberta

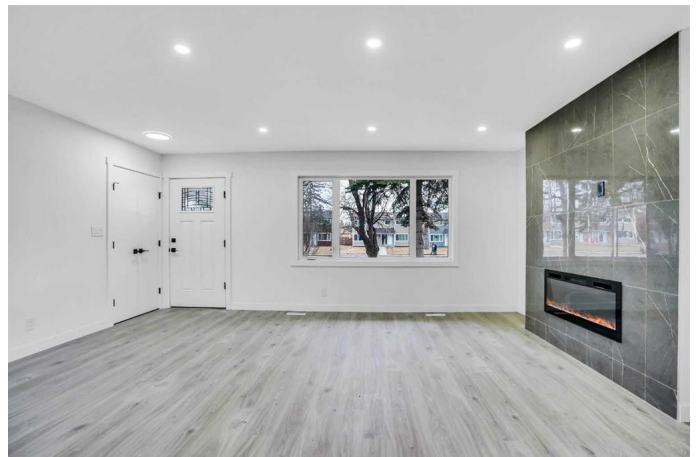
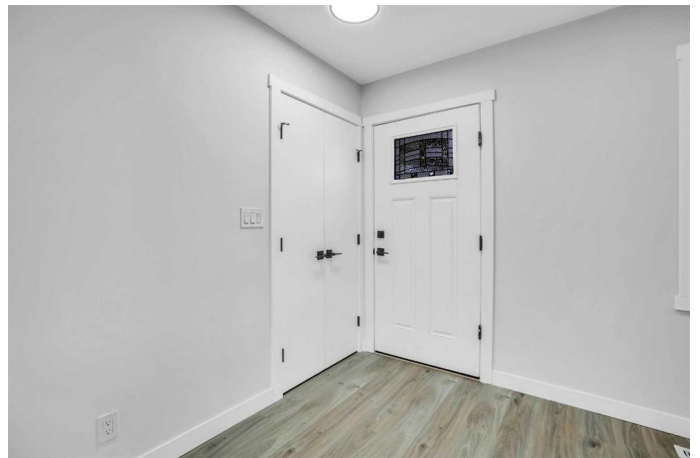
Welcome to this beautifully updated bungalow boasts a spacious 1,057 sq ft living area which has three bedroom 1.5 washroom with a valuable two bedroom legal basement suite perfect for generating additional income.

As you step inside, you will find a bright and inviting open-concept main floor. The living room boasts a beautiful tiled electric fireplace, while the dining area features an elegant accent wall. The kitchen is equipped with quartz countertops and brand-new appliances.

The main floor also includes three spacious bedrooms with their own closets, a full bathroom and a primary bedroom with its own private half-bath, a good sized closet and a feature wall. The legal two bedroom basement suite is complete with a kitchen, a spacious living room and a bathroom.

The house features a big spacious backyard with a wooden deck. There is a two car detached garage along with a space for parking your RV, boat or any additional vehicles.

Recent upgrades include a brand-new roof on both the home and garage, stucco on the outer walls of the house, two new furnaces, a new electric water tank and new windows. Living in this house, you will enjoy easy access to Marlborough Mall, Walmart, restaurants and transit options, as well as nearby parks and schools. Don't miss out â€” schedule a viewing today!



Built in 1970

Essential Information

| | |
|----------------|-------------|
| MLS® # | A2235117 |
| Price | \$634,900 |
| Bedrooms | 5 |
| Bathrooms | 3.00 |
| Full Baths | 2 |
| Half Baths | 1 |
| Square Footage | 1,057 |
| Acres | 0.17 |
| Year Built | 1970 |
| Type | Residential |
| Sub-Type | Detached |
| Style | Bungalow |
| Status | Active |

Community Information

| | |
|-------------|------------------------|
| Address | 4608 Memorial Drive Ne |
| Subdivision | Marlborough |
| City | Calgary |
| County | Calgary |
| Province | Alberta |
| Postal Code | T2A 2P8 |

Amenities

| | |
|----------------|---|
| Parking Spaces | 2 |
| Parking | Double Garage Detached, RV Access/Parking |
| # of Garages | 1 |

Interior

| | |
|-------------------|---|
| Interior Features | No Animal Home, No Smoking Home, Open Floorplan, Master Downstairs, Quartz Counters, Separate Entrance, Storage |
| Appliances | Dishwasher, Electric Stove, Range Hood, Refrigerator, Stove(s), Washer/Dryer |
| Heating | Forced Air |
| Cooling | None |
| Fireplace | Yes |
| # of Fireplaces | 1 |

| | |
|--------------|--------------------------------|
| Fireplaces | Electric |
| Has Basement | Yes |
| Basement | Exterior Entry, Finished, Full |

Exterior

| | |
|-------------------|--------------------------------|
| Exterior Features | Private Entrance, Private Yard |
| Lot Description | Back Lane, Back Yard |
| Roof | Asphalt Shingle |
| Construction | Stucco, Wood Frame |
| Foundation | Poured Concrete |

Additional Information

| | |
|----------------|-----------------|
| Date Listed | June 28th, 2025 |
| Days on Market | 35 |
| Zoning | R-CG |

Listing Details

| | |
|----------------|-----------------------------|
| Listing Office | RE/MAX House of Real Estate |
|----------------|-----------------------------|

Data is supplied by Pillar 9â„¢ MLS® System. Pillar 9â„¢ is the owner of the copyright in its MLS® System. Data is deemed reliable but is not guaranteed accurate by Pillar 9â„¢. The trademarks MLS®, Multiple Listing Service® and the associated logos are owned by The Canadian Real Estate Association (CREA) and identify the quality of services provided by real estate professionals who are members of CREA. Used under license.