

# \$449,000 - 10322 104 Avenue, Lac La Biche

MLS® #A2171183

**\$449,000**

0 Bedroom, 0.00 Bathroom, 4,032 sqft

Multi-Family on 0.00 Acres

NONE, Lac La Biche, Alberta

Excellent Revenue Property! Looking for a good revenue property!!!! This Fourplex is in a great location, close to the Lac La Biche Lake, walking trails, parks and schools. Property consists of four apartments, 3 (2) bedrooms and 1 (1) bedroom with a good revenue stream. Also provides 4 metered parking stalls, separate heating furnaces and coin laundry for additional revenue. Call for your personal viewing today. Priced to Sell at \$459000.00

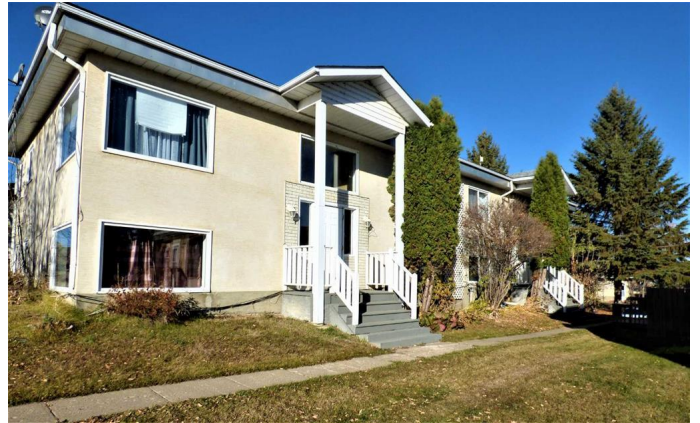
Built in 1961

## Essential Information

MLS® #	A2171183
Price	\$449,000
Bathrooms	0.00
Square Footage	4,032
Acres	0.00
Year Built	1961
Type	Multi-Family
Sub-Type	4 plex
Style	Split Entry
Status	Active

## Community Information

Address	10322 104 Avenue
Subdivision	NONE
City	Lac La Biche
County	Lac La Biche County



Province	Alberta
Postal Code	T0A2C0

**Amenities**

Parking Spaces	4
Parking	Assigned, Plug-In, Stall

**Exterior**

Construction	Stucco, Wood Frame
--------------	--------------------

**Additional Information**

Date Listed	October 6th, 2024
Days on Market	297
Zoning	Medium Density Residential

**Listing Details**

Listing Office	RE/MAX LA BICHE REALTY
----------------	------------------------

Data is supplied by Pillar 9â„¢ MLS® System. Pillar 9â„¢ is the owner of the copyright in its MLS® System. Data is deemed reliable but is not guaranteed accurate by Pillar 9â„¢. The trademarks MLS®, Multiple Listing Service® and the associated logos are owned by The Canadian Real Estate Association (CREA) and identify the quality of services provided by real estate professionals who are members of CREA. Used under license.